



ANTONINI  
NAVI





FULVIO DE SIMONI  
YACHT DESIGN

SPORT  
UP-40 EXPLORER



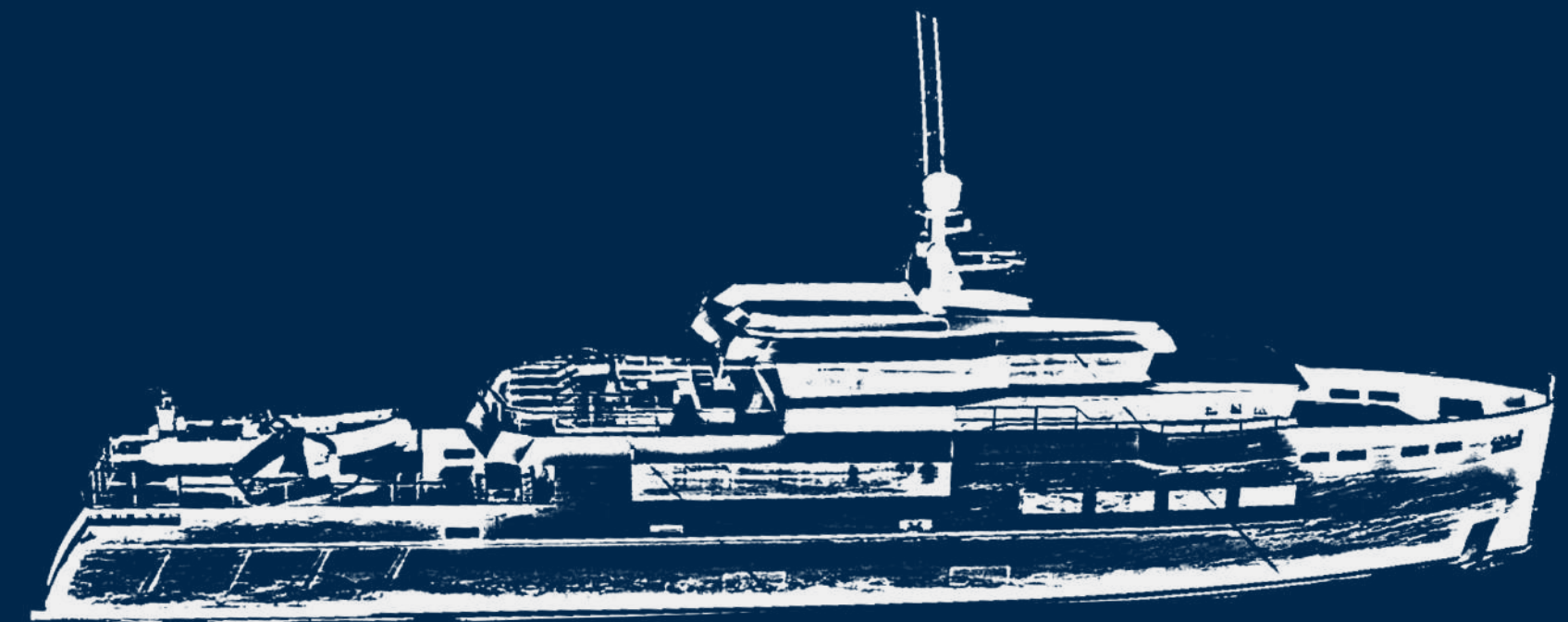
# UP-40 EXPLORER SPORT

## CONCEPT

---



Every detail has been carefully designed to ensure that guests will enjoy a comfortable stay for very long periods of time, on one hand, and to optimize navigation also under extreme conditions, on the other hand. UP - 40 Explorer Sport has a sun-top “flash deck” which gives it a sporty and minimalist DNA.





# UP-40 CONCEPT UTILITY PLATFORMS

---

“Utility Platform” is the first pre-compartmented modular platform for the construction of steel superyachts.



SLOT AVAILABLE: 2026



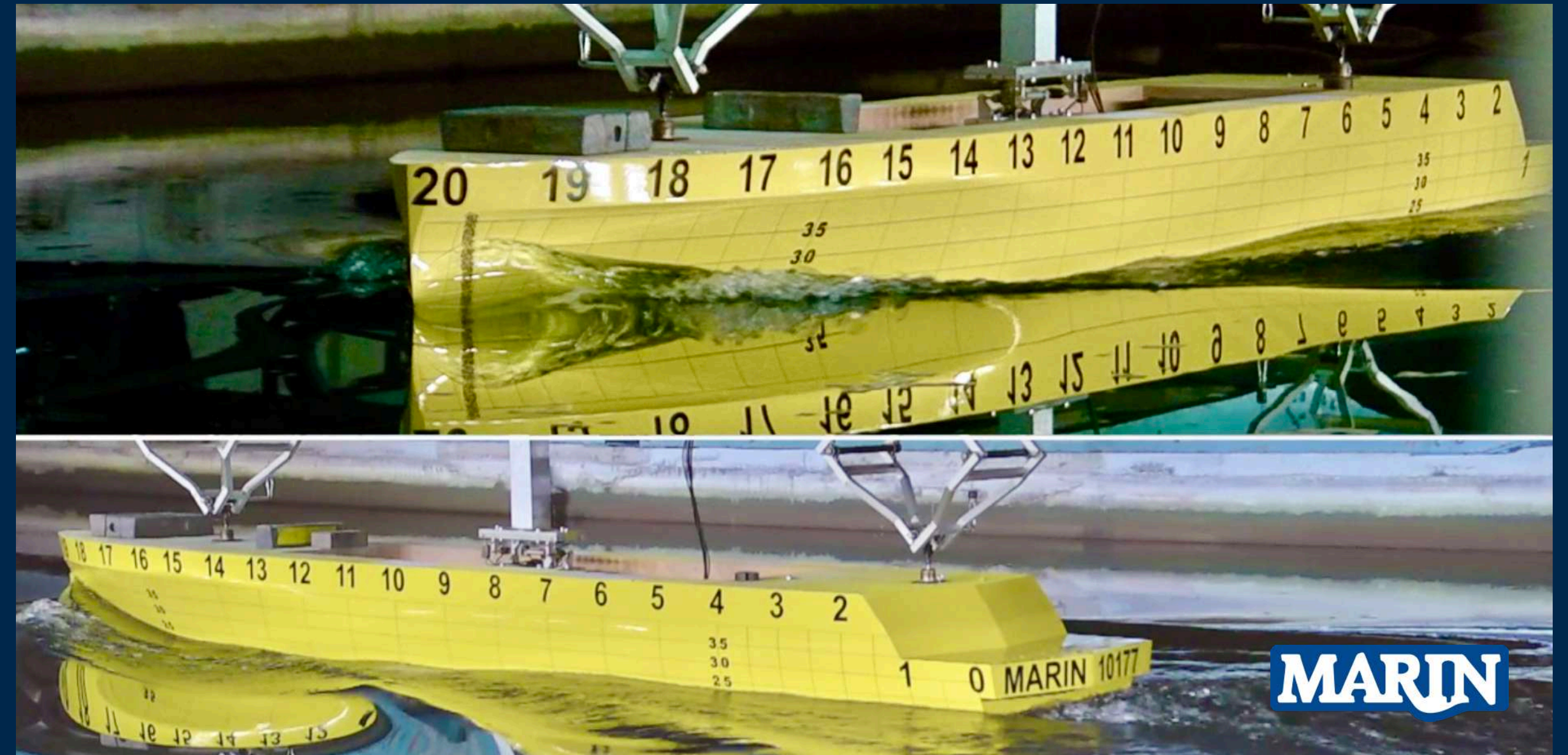


YACHT DESIGNER  
FULVIO DE SIMONI

Fulvio de Simoni initiated his career in the 1970s. Known for his multifaceted, innovative, and non-conformist design approach, he collaborated with shipyards globally and contributed to the construction of over three thousand boats, earning numerous awards.



FULVIO DE SIMONI  
YACHT DESIGN



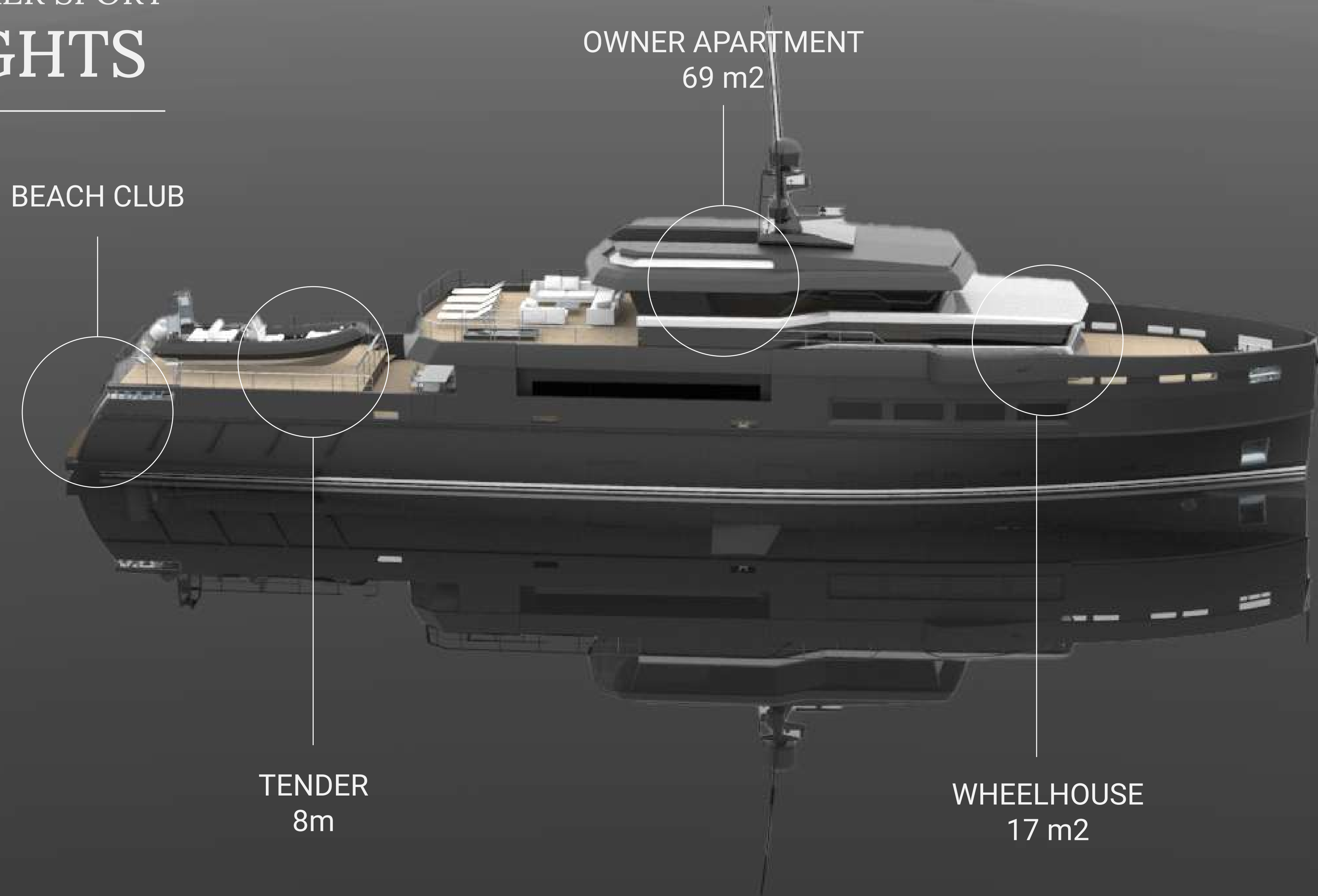
The hull, hull lines, and appendages underwent static and dynamic testing at the MARIN Maritime Research Institute in the Netherlands.



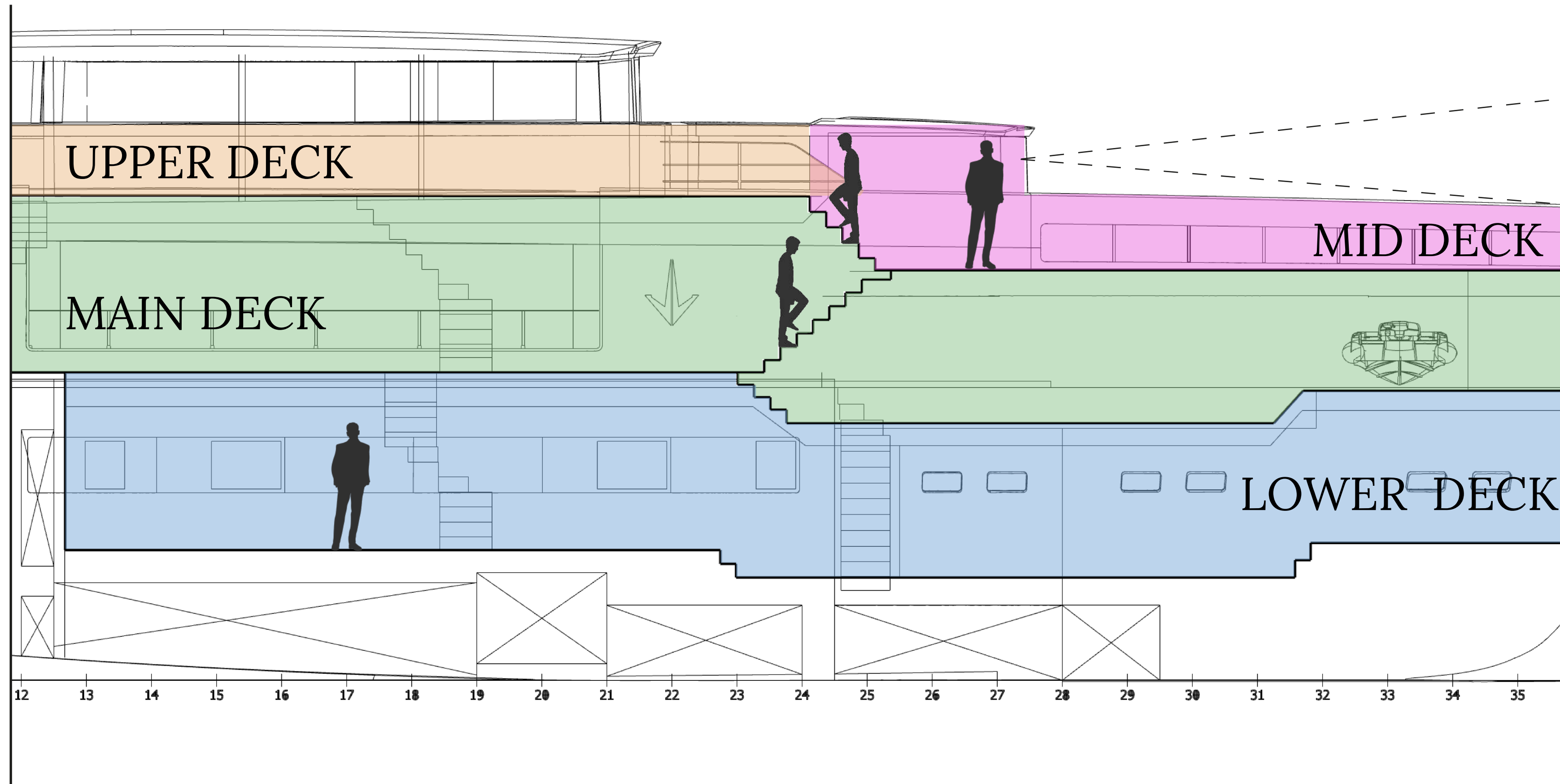
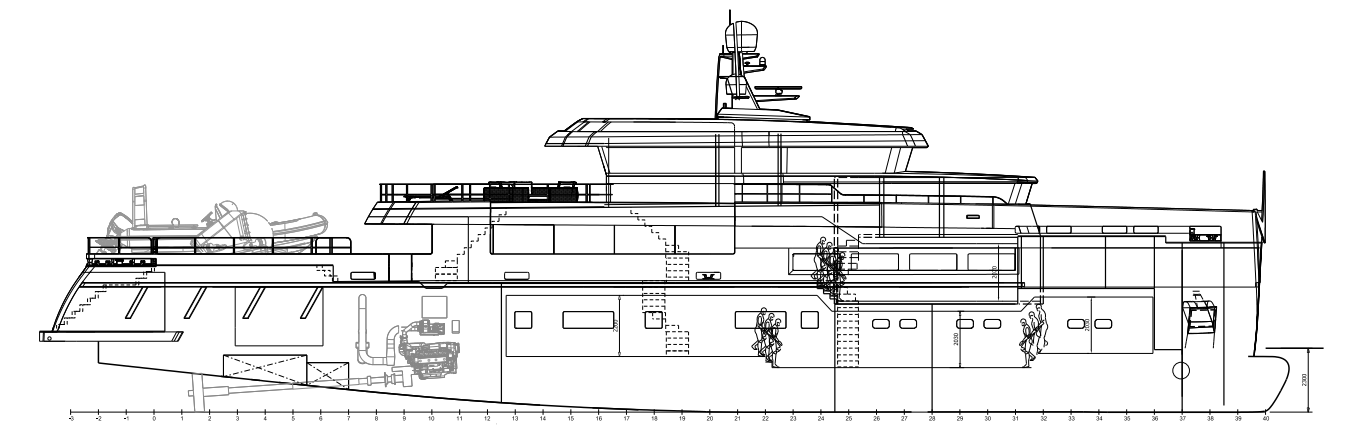


UP-40 EXPLORER SPORT  
**STRENGTHS**

---

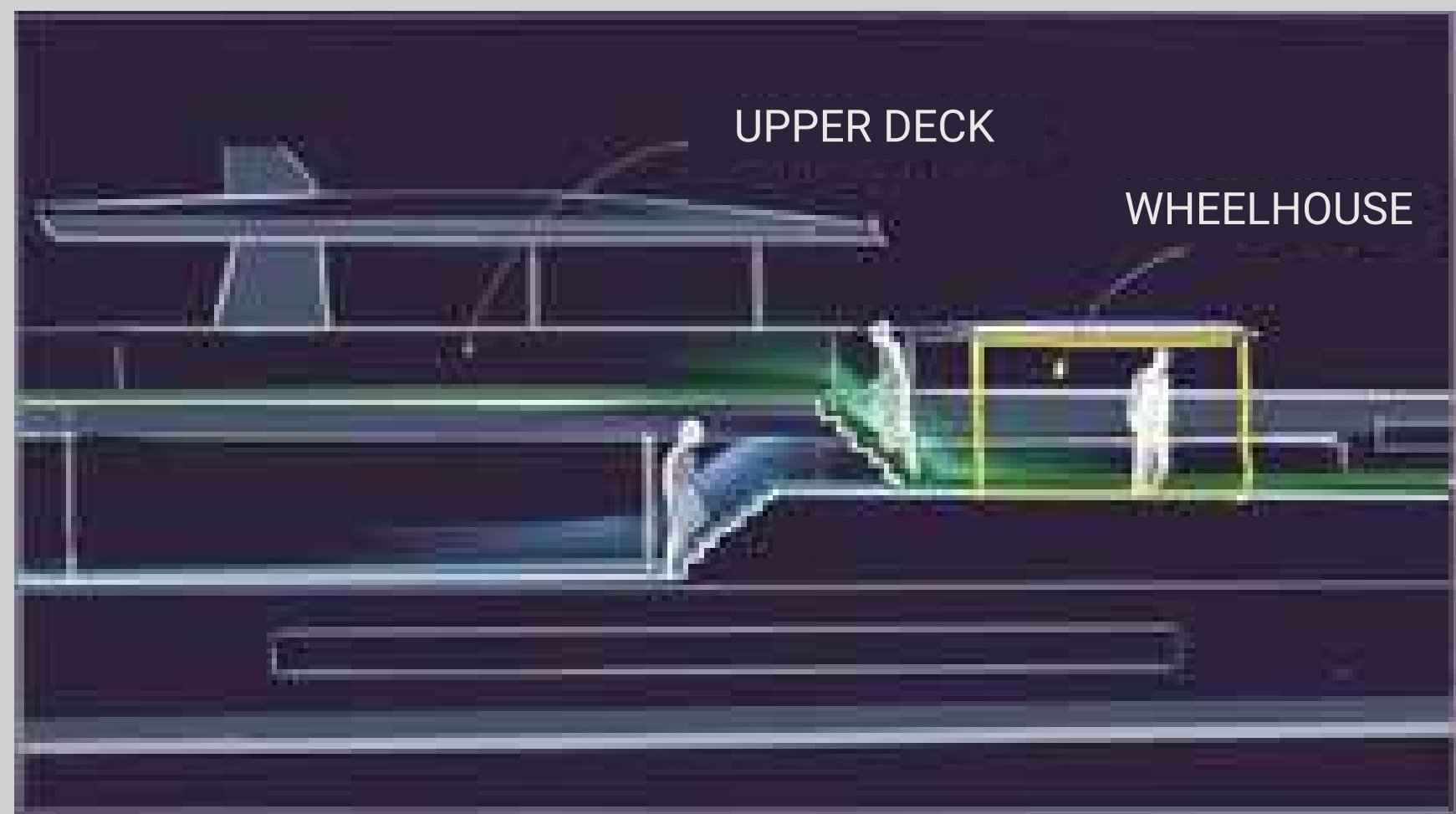


# UP-40 EXPLORER SPORT DECKS VOLUMES

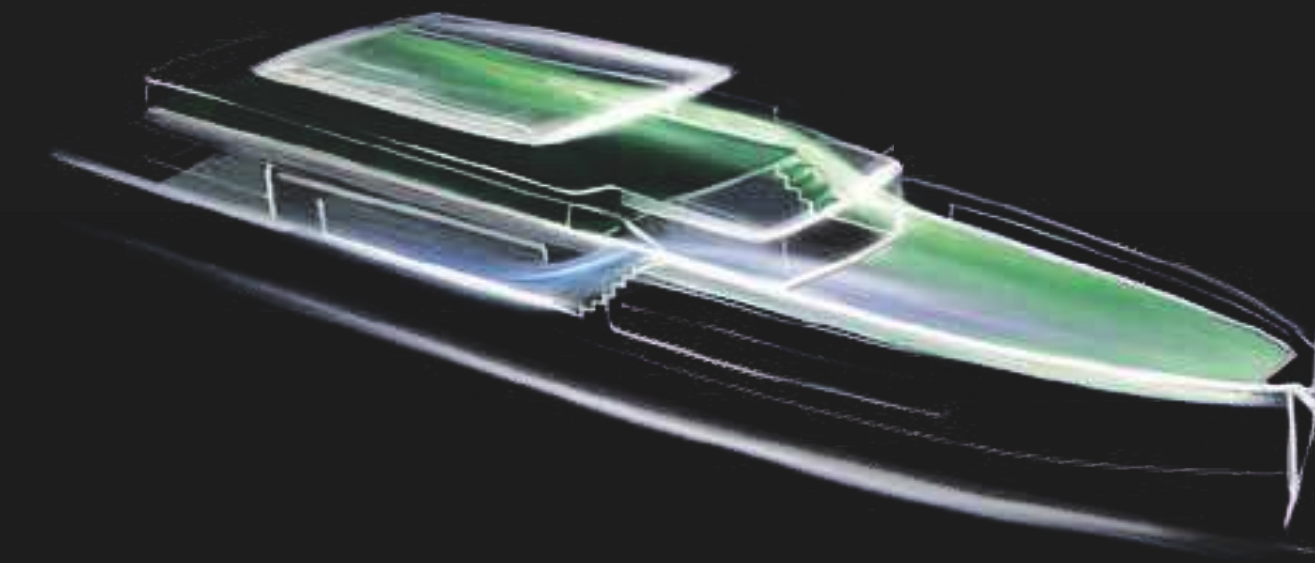


# UP-40 EXPLORER SPORT ENCLOSED - BRIDGE

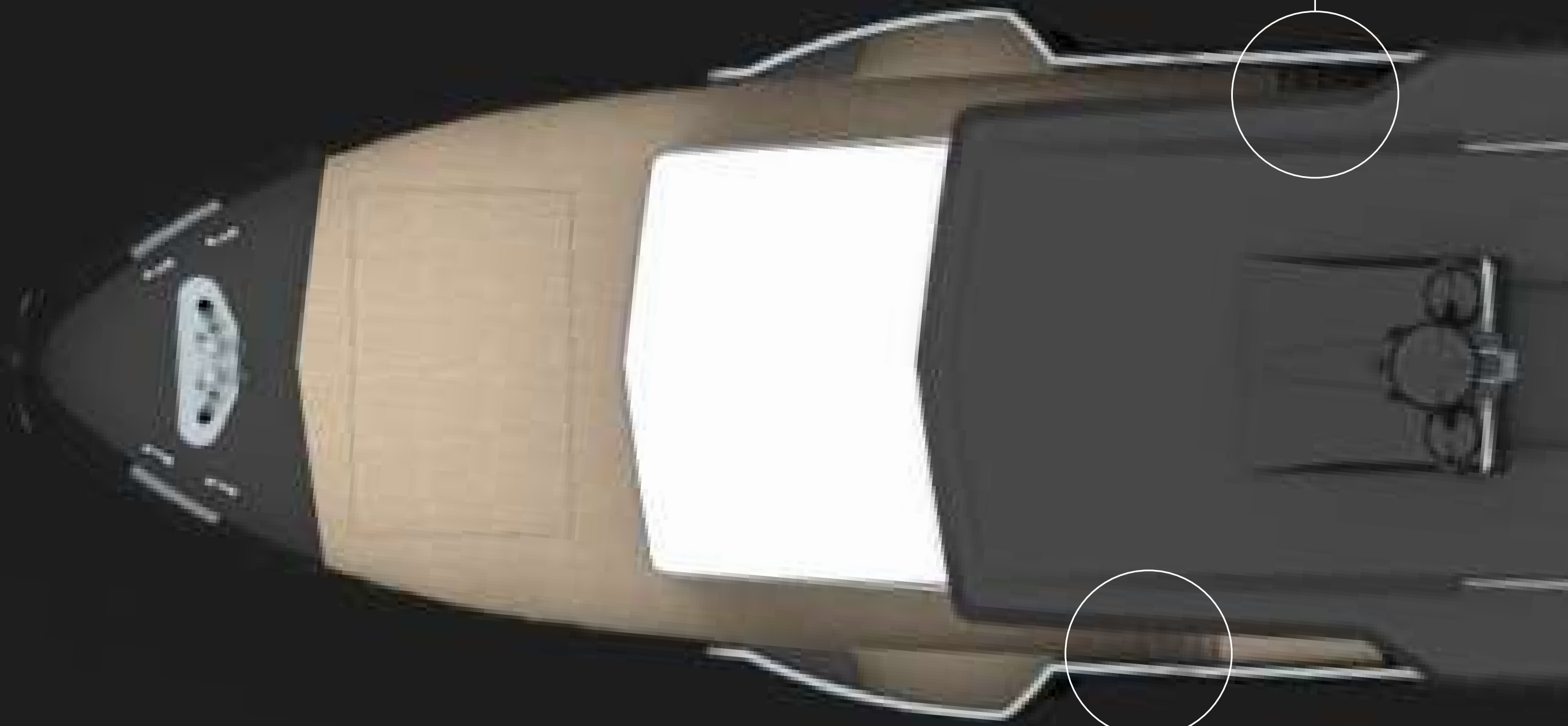
From the Main Deck it is possible to reach the Forward Deck along the starboard side of the boat. Conversely, the Forward Deck is directly connected with the Upper Deck or private access to the Owner's area.



2 LINEAR DECKS CONNECTED BY A MID-DECK WHEELHOUSE



STAIRS TO  
LOWER DECK



STAIRS TO  
UPPER DECK



# BEACH CLUB





# OWNER'S SUITE





UP-40 EXPLORER SPORT

# TECHNICAL SPECIFICATION

---

## MATERIALS

Hull: ..... Steel

Superstructure: ..... Aluminium

## DIMENSIONS

Length over all (LOA): ..... 43.0 m

Maximum beam: ..... 8.5 m

Depth, amidship:..... 4.4 m

Draught, full load under the keel: ..... 2.2 m

GROSS TONNAGE: ..... <500 GT

## CAPACITIES

Fuel: ..... 48.000 Its

FreshWater: ..... 9.000 Its

Black Water: ..... 5.800 Its

Bilge: ..... 2.200 Its

Pool: ..... 3.500 Its

## PERFORMANCE

Cruising speed: ..... 16 kts

Max Speed: ..... 16.0 kts

Range @10 kts:..... 4.000 nm

ENGINES std PROPULSION:..... 2xMAN 1029 kW

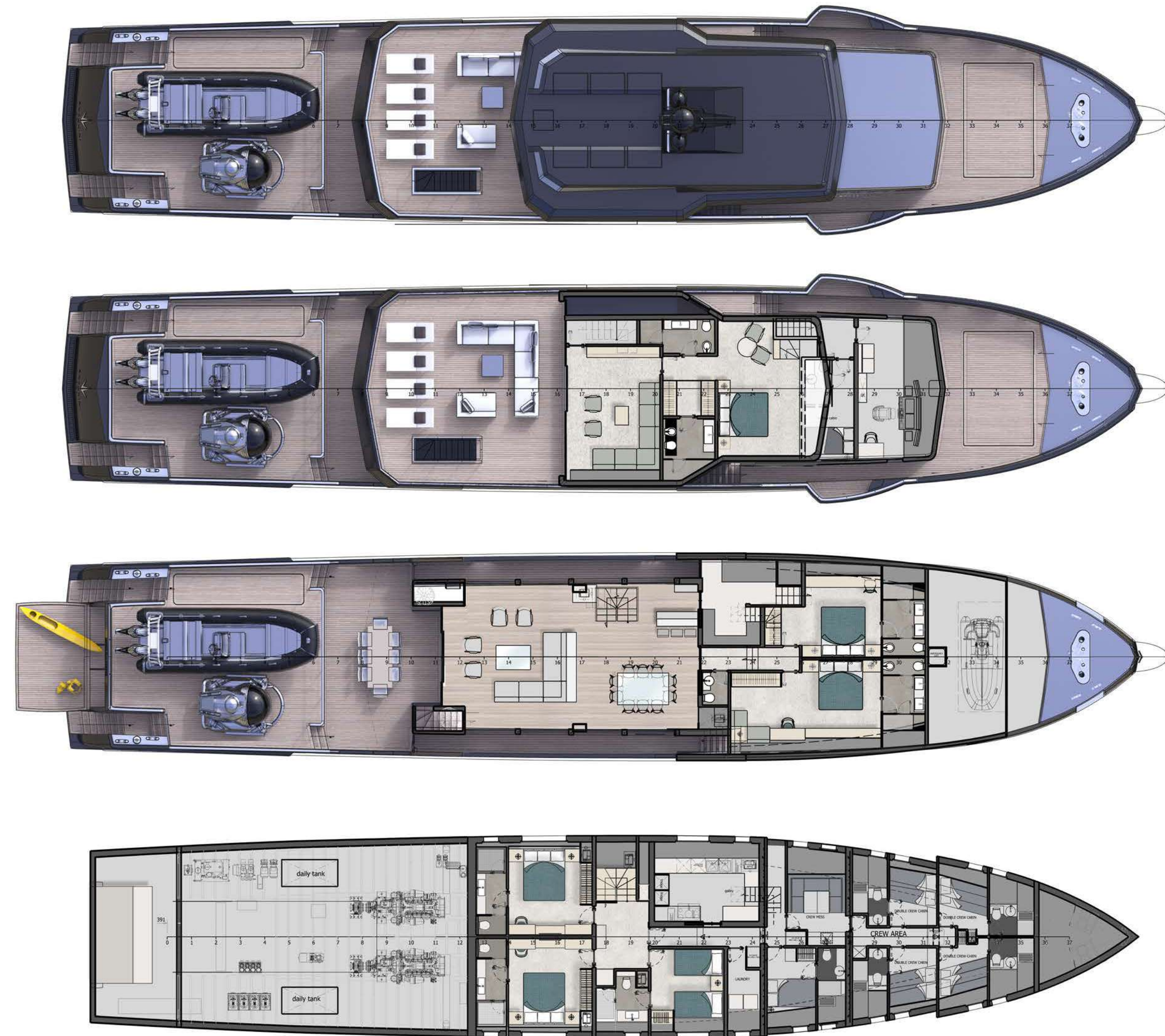
## ACCOMMODATION

Passengers: ..... 12p - 6 Cabins

Crew: ..... 7+1p - 5 Cabins



UP-40 EXP SPORT  
**GENERAL  
ARRANGEMENT**

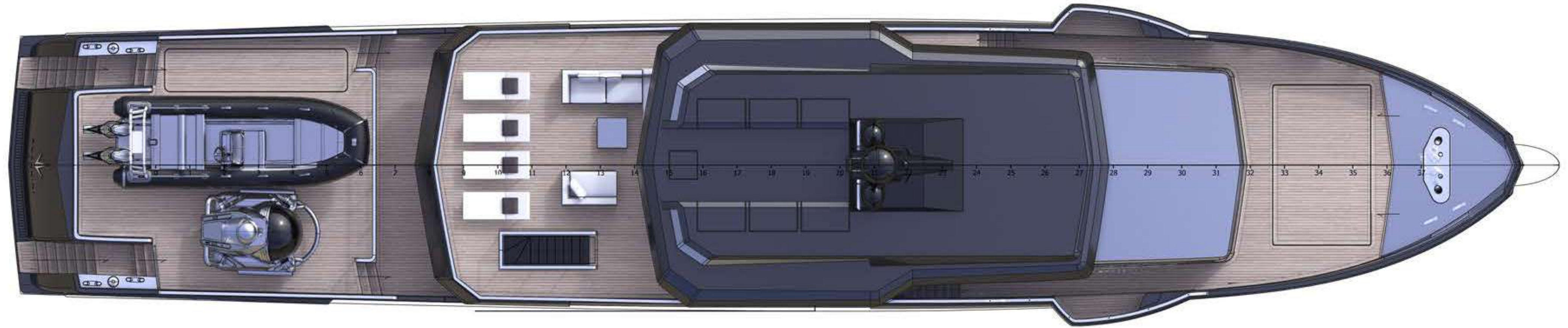




UP-40 EXPLORER SPORT

# SUN DECK | BRIDGE DECK

---





UP-40 ISLAND EXPLORER SPORT  
**UPPER DECK**

---





# UP-40 EXPLORER SPORT MAIN DECK

---





# UP-40 EXPLORER SPORT LOWER DECK

---







ANTONINI  
NAVI

SPORT

UP-40 EXPLORER





SPORT

UP-40 EXPLORER





YACHTS

UP-40 PLATFORM





ANTONINI  
N A V I

ANTONINI NAVI S.R.L.

Sede legale e stabilimento:

Località Pertusola - Frazione Muggiano - 19032 Lerici (LA SPEZIA) - ITALY

Ph +39 0187 1771300

[info@antonininavi.com](mailto:info@antonininavi.com)

[www.antonininavi.com](http://www.antonininavi.com) - [www.gruppoantonini.it](http://www.gruppoantonini.it)